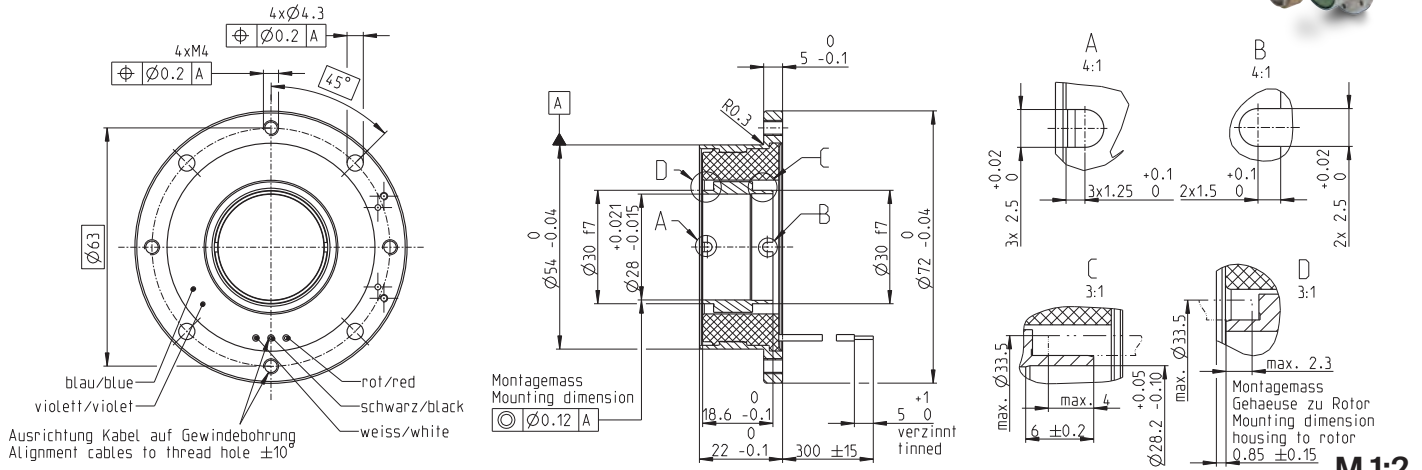
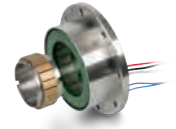


EC frameless DT 50 S $\varnothing 54$ mm, brushless, 170 watt

Dynamic Torque



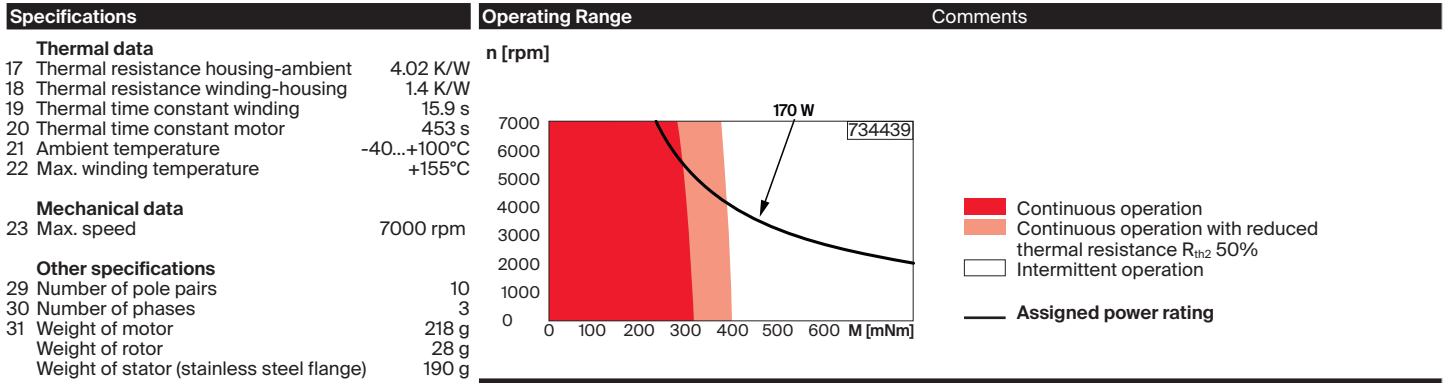
EC frameless DT

M 1:2

- Stock program
- Standard program
- Special program (on request)

Part Numbers	
without Hall sensors	734439

Motor Data	
Values at nominal voltage	
1 Nominal voltage	V 48
2 No load speed	rpm 6840
3 No load current	mA 162
4 Nominal speed	rpm 5640
5 Nominal torque	mNm 335
6 Nominal current (max. continuous current)	A 4.57
7 Stall torque	mNm 2300
8 Stall current	A 83.5
9 Max. efficiency	% 91.4
Characteristics	
10 Terminal resistance phase to phase	Ω 0.575
11 Terminal inductance phase to phase	mH 0.432
12 Torque constant	mNm/A 66.6
13 Speed constant	rpm/V 143
14 Speed/torque gradient	rpm/mNm 1.26
15 Mechanical time constant	ms 0.908
16 Rotor inertia	gcm ² 70



Modular System	Sensor	Motor Control
Values listed in the table are nominal.	521_ TSX 50 MAG with Hall sensors	551_ES CON Module 50/5
Connection motor (Cable AWG 18)		553_ES CON 50/5
red Motor winding 1		561_EPO S4 Micro 24/5 C AN
black Motor winding 2		561_EPO S4 Micro 24/5 E therCAT
white Motor winding 3		562_EPO S4 Module 50/5
Connection NTC (Cable AWG 24)		565_EPO S4 Compact 50/5
purple NTC		567_EPO S4 50/5
blue NTC		568_EPO S4 Disk 60/8 C AN
Resistance 25°C: 5 k Ω \pm 1%, beta (25–85°C): 3490 K		568_EPO S4 Disk 60/8 E therCAT

Comment	Variants
For Torque control data, refer to "Installation Manual" available on maxon online shop.	Aluminum flange (-62 g) on request Without flange: maxon integration on request