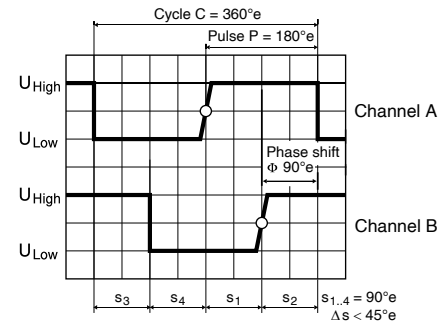
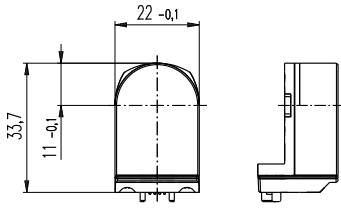


Encoder Enc 22 100 CPT, 2 channels



sensor

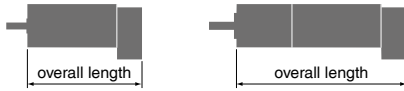
Direction of rotation cw (definition cw p. 78)

- Stock program
- Standard program
- Special program (on request)

Part Numbers

103935	110520	110521
--------	--------	--------

Type	103935	110520	110521
Counts per turn	100	100	100
Number of channels	2	2	2
Max. operating frequency (kHz)	20	20	20
Max. speed (rpm)	12000	12000	12000
Shaft diameter (mm)	3	2	3



maxon Modular System				
+ Motor	Page	+ Gearhead	Page	Overall length [mm] / • see Gearhead
RE 25	144/146			68.6
RE 25	144/146	GP 26, 0.75 - 4.5 Nm	390	•
RE 25	144/146	GP 32, 0.75 - 4.5 Nm	392	•
RE 25	144/146	GP 32, 0.75 - 4.5 Nm	393	•
RE 25	144/146	GP 32, 1.0 - 6.0 Nm	396	•
RE 25	144/146	GP 32 S	426-433	•
A-max 19, 1.5 W	164			43.3
A-max 19, 1.5 W	164	GP 19, 0.1 - 0.3 Nm	381	•
A-max 19, 1.5 W	164	GP 22, 0.1 - 2.0 Nm	383/385	•
A-max 19, 1.5 W	164	GS 24, 0.1 Nm	389	•
A-max 19, 1.5 W	164	GP 22 S	424/425	•
A-max 19, 2.5 W	166			45.9
A-max 19, 2.5 W	166	GP 19, 0.1 - 0.3 Nm	381	•
A-max 19, 2.5 W	166	GP 22, 0.1 - 2.0 Nm	383/385	•
A-max 19, 2.5 W	166	GS 24, 0.1 Nm	389	•
A-max 19, 2.5 W	166	GP 22 S	424/425	•
A-max 22	168/170			46.3
A-max 22	168/170	GP 22, 0.1 - 0.3 Nm	382	•
A-max 22	168/170	GP 22, 0.1 - 2.0 Nm	382-385	•
A-max 22	168/170	GS 24, 0.1 Nm	389	•
A-max 22	168/170	GP 22 S	424/425	•
A-max 26	171-174			59.1
A-max 26	171-174	GP 26, 0.75 - 4.5 Nm	390	•
A-max 26	171-174	GS 30, 0.07 - 0.2 Nm	391	•
A-max 26	171-174	GP 32, 0.75 - 4.5 Nm	392	•
A-max 26	171-174	GP 32, 0.75 - 4.5 Nm	393	•
A-max 26	171-174	GP 32, 1.0 - 6.0 Nm	397	•
A-max 26	171-174	GS 38, 0.1 - 0.6 Nm	404	•
A-max 26	171-174	GP 32 S	426-433	•

Technical Data	
Supply voltage V_{CC}	5 V \pm 10%
Typical current draw	18 mA
Output signal	TTL compatible
Phase shift ϕ	90°e \pm 45°e
Signal rise time (typically, at $C_L = 25$ pF, $R_L = 11$ k Ω , 25°C)	200 ns
Signal fall time (typically, at $C_L = 25$ pF, $R_L = 11$ k Ω , 25°C)	50 ns
Operating temperature range	-20...+85°C
Moment of inertia of code wheel	≤ 0.05 gcm ²
Output current per channel	min. -1 mA, max. 5 mA

Pin Allocation

Micromodule contact strip
Type Lumberg MICS 4
Pin 4 GND
Pin 3 Channel A
Pin 2 V_{CC}
Pin 1 Channel B

recommended connectors:
Micromodule connector
Type Lumberg MICA 4

Order number for connector with cable: **3419.506**

