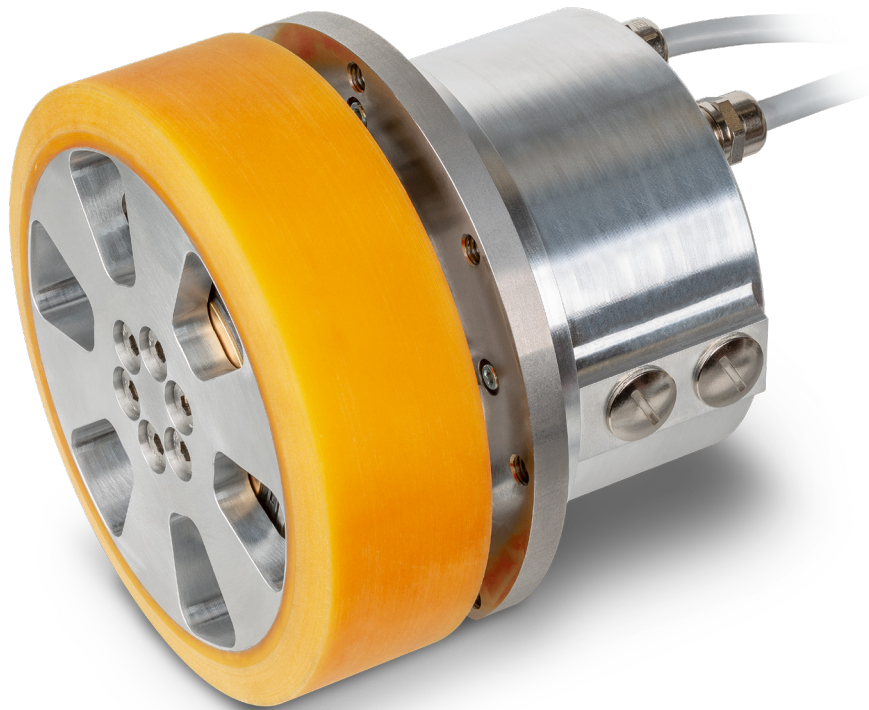


Compact and highly efficient.
The new maxon wheel drive system for AGV and AMR.



NEW

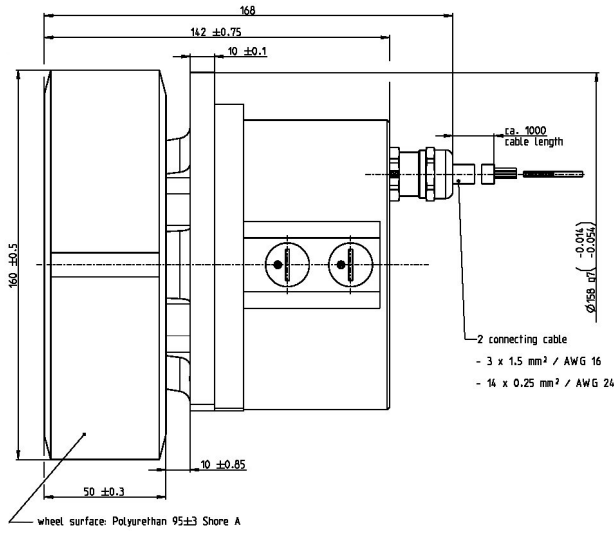
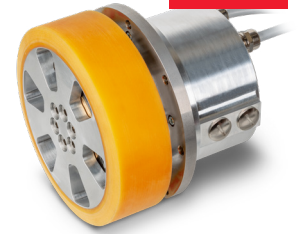
MW 500

maxon wheel drive system

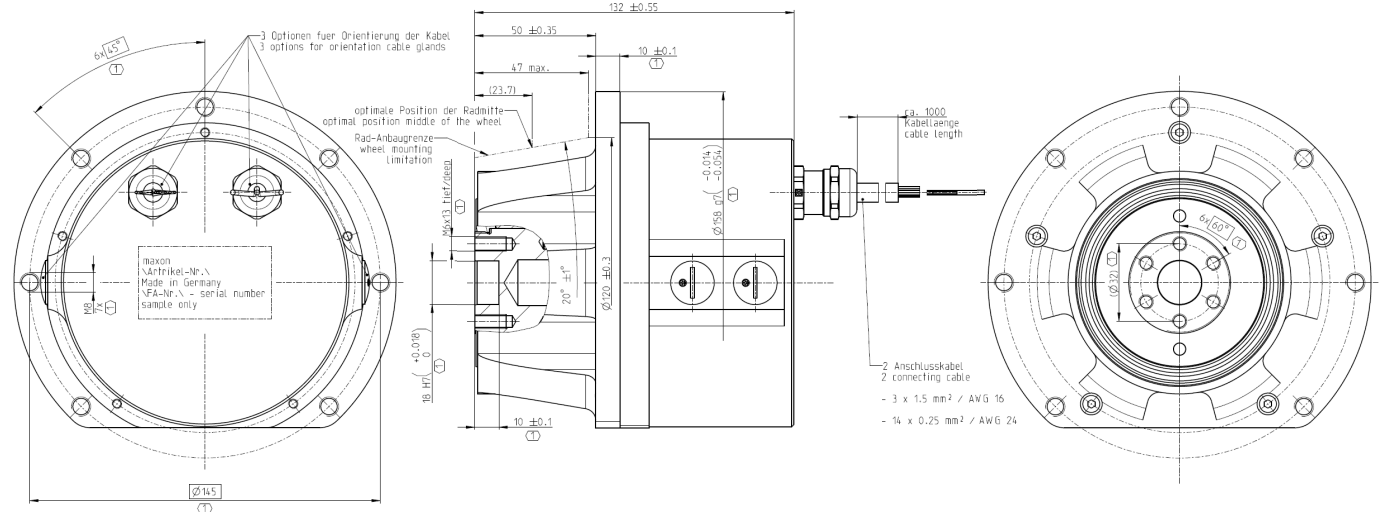
Payload per drive ≤500 kg

MW

Preliminary Data



View without wheel:



M 1:3

Specifications				
1	Wheel drive	Max. radial load	kg	500
		Nominal wheel speed @ nominal voltage	rpm	20 - 290
		Nominal Voltage (max. 60)	VDC	12 - 60
		Nominal current (max. rms current)	A	12.1 - 3.28
		Nominal wheel torque (max. continuous torque)	Nm	8.5 - 27
		Peak wheel torque < 5 sec	Nm	70
		Type of protection	IP	54 (65/67)
		Operating temperature	°C	0...+50
		Basic weight	kg	6
		Life time	h	10000
		2	Wheel	Diameter (and customized)
3	Holding Brake (integrated)	Braking torque 24 VDC (reduced losses at 12 V)	W	Up to 110 (<< 3)
4.1	Encoder (integrated Hall Sensors)	Signal line (Single ended)	signal	H1, H2, H3
4.2	Encoder (integrated)	Counts per turn	cpt	1024
5.1	BLDC Controller (integrated)	Interface (under development)	bus	CANopen
5.2	BLDC Controller (extern, e.g. EPOS4/MiniMACS)	Interface	bus	CANopen and EtherCAT

All data depending on winding configuration and voltage level. Data under the condition of unit mouted on sufficient heat sink. Nominal values valid for 25°C ambient temperature. If the unit is run above 25°C ambient temperature, nominal values are reduced.

The new maxon wheel drive system for AGV and AMR.

- Highly efficient
- Compact
- Modular
- Highly reliable
- Perfectly adaptable components

