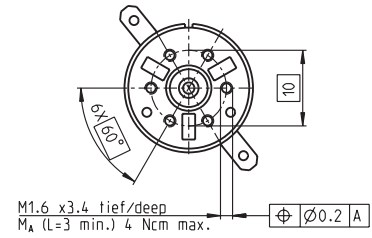
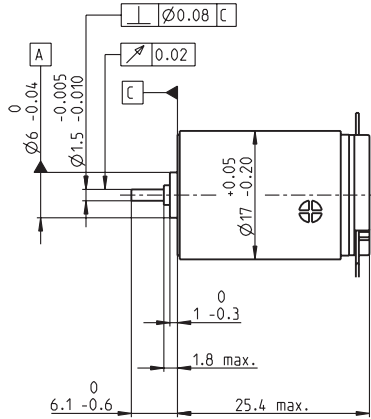
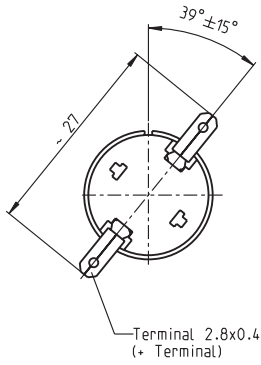


RE-max 17 Ø17 mm, Precious Metal Brushes CLL, 4 Watt



M 1:1

- Stock program
- Standard program
- Special program (on request)

Part Numbers

Motor Data	214895	214896	214897	214898	214899	215982	215983	215985	215986	215987	
Values at nominal voltage											
1 Nominal voltage	V	3	4.5	12	15	21	24	24	30	36	48
2 No load speed	rpm	11300	9650	10600	10700	11300	11000	9830	10200	10900	9560
3 No load current	mA	40.7	21	9.2	7.5	5.81	4.91	4.06	3.47	3.2	1.94
4 Nominal speed	rpm	10500	7810	8110	8210	8740	8520	7280	7680	8290	6890
5 Nominal torque (max. continuous torque)	mNm	1.42	2.57	3.67	3.64	3.61	3.63	3.62	3.59	3.53	3.47
6 Nominal current (max. continuous current)	A	0.6	0.6	0.35	0.281	0.209	0.18	0.16	0.132	0.115	0.0744
7 Stall torque	mNm	18.5	13.1	15.5	15.5	16.1	15.9	14	14.4	14.8	12.5
8 Starting current	A	7.32	2.95	1.45	1.17	0.91	0.772	0.604	0.518	0.473	0.262
9 Max. efficiency	%	86	84	85	85	85	85	85	85	85	84
Characteristics											
10 Terminal resistance	Ω	0.41	1.52	8.3	12.8	23.1	31.1	39.7	57.9	76.2	183
11 Terminal inductance	mH	0.0114	0.0349	0.206	0.314	0.558	0.759	0.956	1.38	1.75	4.04
12 Torque constant	mNm/A	2.53	4.42	10.7	13.3	17.7	20.6	23.2	27.8	31.4	47.6
13 Speed constant	rpm/V	3780	2160	889	720	540	463	412	344	304	201
14 Speed / torque gradient	rpm/mNm	613	744	687	696	705	698	707	716	739	773
15 Mechanical time constant	ms	6.81	6.4	6.25	6.26	6.27	6.28	6.31	6.29	6.31	6.42
16 Rotor inertia	gcm ²	1.06	0.82	0.868	0.859	0.849	0.859	0.852	0.838	0.816	0.793

Specifications

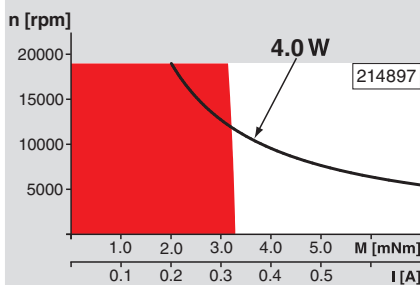
Thermal data	
17 Thermal resistance housing-ambient	35 K/W
18 Thermal resistance winding-housing	12 K/W
19 Thermal time constant winding	7.75 s
20 Thermal time constant motor	343 s
21 Ambient temperature	-30...+65°C
22 Max. permissible winding temperature	+85°C
Mechanical data (sleeve bearings)	
23 Max. permissible speed	19000 rpm
24 Axial play	0.05 - 0.15 mm
25 Radial play	0.012 mm
26 Max. axial load (dynamic)	0.8 N
27 Max. force for press fits (static)	35 N
28 Max. radial load, 5 mm from flange	1.4 N
Mechanical data (ball bearings)	
23 Max. permissible speed	19000 rpm
24 Axial play	0.05 - 0.15 mm
25 Radial play	0.025 mm
26 Max. axial load (dynamic)	2.2 N
27 Max. force for press fits (static)	30 N
28 Max. radial load, 5 mm from flange	7.8 N
Other specifications	
29 Number of pole pairs	1
30 Number of commutator segments	7
31 Weight of motor	26 g
CLL = Capacitor Long Life	

Values listed in the table are nominal.
Explanation of the figures on page 79.

Option

- Ball bearings in place of sleeve bearings
- Pigtails in place of terminals
- Without CLL

Operating Range



Comments

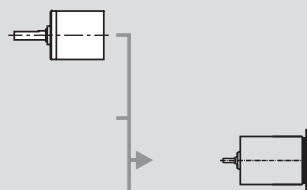
- Continuous operation**
In observation of above listed thermal resistance (lines 17 and 18) the maximum permissible winding temperature will be reached during continuous operation at 25°C ambient.
= Thermal limit.
- Short term operation**
The motor may be briefly overloaded (recurring).
- Assigned power rating**

maxon Modular System

Overview on page 20–25

Planetary Gearhead

Ø16 mm
0.1 - 0.3 Nm
Page 254



Recommended Electronics:

ESCON 36/2 DC	Page 342
ESCON Module 50/5	343
ESCON 50/5	344
Notes	22