

# High Efficiency Joint

## HEJ 70-48-50

### 30 V – 60 V | 50 Nm | 28 rad/s

This is a highly compact, integrated and efficient robotic drive system that contains all subsystems to provide a full motion solution, such as electronics, motor, gearing and sensing. This drive is fully enclosed, ingress- and impact-rated, and designed for continuous operation and active thermal cooling if necessary. It offers high robustness and a long operating lifetime. Controlled via *EtherCAT*, it can implement various internal control and gain topologies, rendering it suitable for all robotics applications. Simulation models enable dependable robotic system designs.


**EtherCAT**

All data are provided for  $U_{DC} = 48\text{ V}$  and  $T_{amb} = 25^\circ\text{C}$ , unless otherwise specified.

Specifications for different voltage levels or other operating limits, and corresponding simulation models, are available upon request.

#### OUTPUT CHARACTERISTICS

Max. Joint velocity	$U_{DC} = 48\text{ V}$	+/- 22 rad/s
	$U_{DC} = 60\text{ V}$	+/- 28 rad/s
Max. Joint torque, actively controlled & repetitive	+/- 50 Nm <small>Note: Subsequent design versions will achieve &gt;60 Nm. Contact us for details.</small>	
Nominal joint torque <small>This torque can be maintained indefinitely without external forced air cooling. Conditions: Actuator mounted in free space (to allow convective cooling), and with a joint velocity of 2 rad/s.</small>	+/- 19 Nm <small>Note: Subsequent design versions will achieve &gt;25 Nm. Contact us for details.</small>	

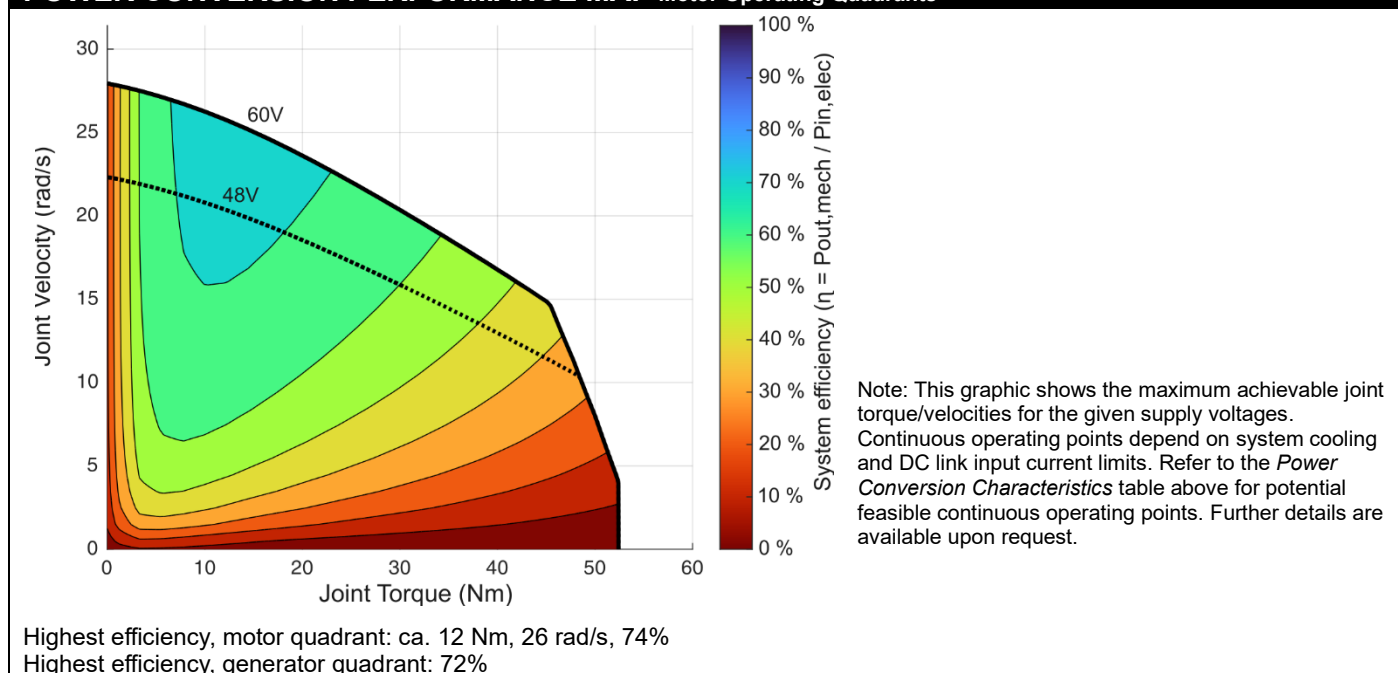
#### POWER CONVERSION CHARACTERISTICS Motor Operating Quadrants

$U_{DC}$ (V) DC-Link Voltage	$V_{joint}$ (rad/s) Joint Velocity	$M_{joint}$ (Nm) Joint Torque	$I_{in}$ (A) DC-Link Input Curr.	$P_{loss}$ (W) Total System Loss	Efficiency (%) $P_{out,mech} / P_{in,elec}$	
48	0	0	0.04	2	0	●
48	0	50	21.7	1040	0	▲
48	0	40	10.6	509	0	▲
48	0	30	5.2	248	0	▲
48	0	20	2.2	52	0	●
48	0	10	0.6	15	0	●
Improved values will be published soon.						
48	10	0	0.4	17	0	●
48	10	45	25.8	787	36	▲
48	10	25	9.5	205	55	▲
48	15	0	0.3	23	0	●
48	15	30	15.9	314	59	▲
48	15	15	6.9	103	68	▲
48	20	0	0.7	34	0	●
48	20	10	5.8	79	72	●
Reach out to robotics@maxongroup.com for details.						
60	25	0	0.7	42	0	●
60	25	15	8.5	134	74	▲

Operating points with a triangle (▲) can only be maintained for short times (some seconds, due to thermal limitations (mainly: continuous input current limited to  $6\text{ A}_{RMS}$ )).

Operating points marked with a circle (●) can be maintained continuously, but potentially require adequate external forced air cooling.

Simulation models are available upon request.

**POWER CONVERSION PERFORMANCE MAP Motor Operating Quadrants**

**ELECTRICAL CHARACTERISTICS**

Operating input voltage range (voltages as low as 20V are possible but might have implications – contact us.)	30 V – 60 V
Max. allowable transient input voltage (e.g., due to inductive spikes or noise on the supply bus)	67.0 V
DC link input capacitance	240 $\mu$ F
Max. power supply input current During transients or accelerations, the system can create high current peaks. Capacitive inrush current not considered. Unloaded joint.	< 40 A
Max. continuous power supply current (This is a conservative limit – please approach us if you plan on exceeding this limit)	8.0 A <sub>RMS</sub>

**CONTROL CHARACTERISTICS**

Control modes	Joint position, velocity, torque, motor current (FOC) Joint impedance controller (simultaneous control of position, velocity, torque) PDO-mappable control gains
Joint position sensor	Resolution: 14 bit. Absolute angular error: < 0.01 rad (0.6°) Note that the firmware applies sensor fusion techniques to reduce noise and INL error on this encoder signal. This sensor measures the absolute output position (after the gear).
Joint torque measurement Via electric motor current, compensated	Absolute error, steady-state: < 0.8 Nm
Joint velocity filtering	Configurable lowpass
Controller execution rate	Current controller (FOC): 25 kHz All others: 2.5 kHz PWM frequency: 50 kHz
Max. <i>EtherCAT</i> communication rate	1 kHz
Internal temperature sensors Also used for internal protection like i2t	Motor winding and power electronics, PDO-mappable
Motor temperature i2t protection	Configurable
Mechanical backlash Fixed motor position, movement of the joint	Avg: 0.49°. Min – Max: 0.37° – 0.60° Depending on the selected control topology, operating regime and gains, the inherent internal mechanical backlash can potentially affect the controller performance
Tot. mech. moment of inertia, at joint	55 kgcm <sup>2</sup>
Backdriving torque (system disabled, including joint seal friction)	ca. 0.5 Nm
Acceleration time	<> ms Time it takes to accelerate the joint from standstill to its maximum velocity.

## ENVIRONMENTAL CHARACTERISTICS

Ingress protection	IP67, also with rotating joint and applied bending moments
Ambient operating temperature	-20°C to +60°C (might require adequate cooling if the system exhibits losses)
Thermal interface Note: The thermal dissipation capability serves only as an indication. Actual performance depends on external heat transfer system and environment. Details are available upon request.	Integrated heat sinks for forced air cooling. Continuous thermal dissipation (active cooling) up to ca. 140 W. Integrated and user-controllable fan power supply.

## LIFETIME CHARACTERISTICS

Note: A high emphasis was put on creating a highly reliable and robust product. Nonetheless, the operating lifetime of this drive strongly depends on its load cases and environmental aspects. The indicated values are only a (simplified) guideline. Further details are available upon request.	
High-cycle fatigue: Joint impact/collision events	12e6 impacts at 38 Nm 100e3 impacts at 50 Nm 1e3 impacts at 67 Nm
Lifetime at constant operation Note 1: Depending on environmental factors (e.g., temperature, dust or chemicals exposure), the joint output seal may potentially degrade earlier. Note 2: These operating points are naturally dependent on temperature and specific aspects of the load cycle and gear lubrication life. Details can be provided upon request.	10 Nm, 22 rad/s: >56'000 h 30 Nm, 5 rad/s: >56'000 h

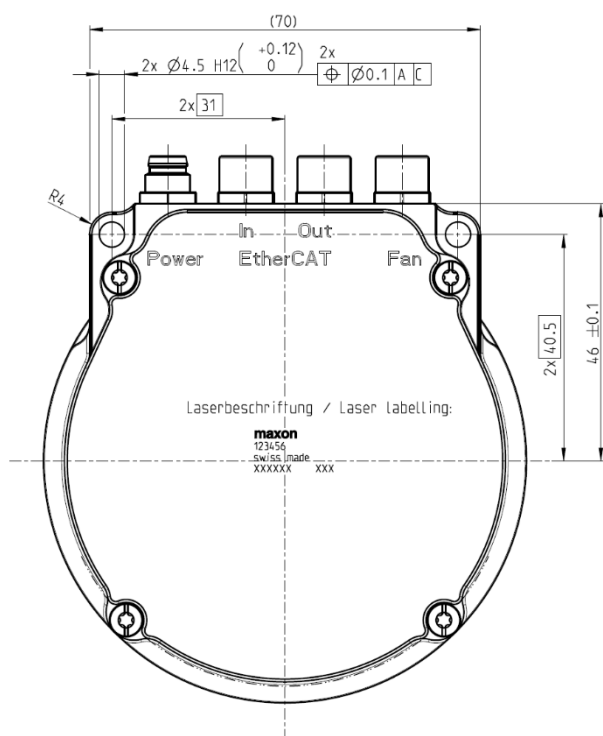
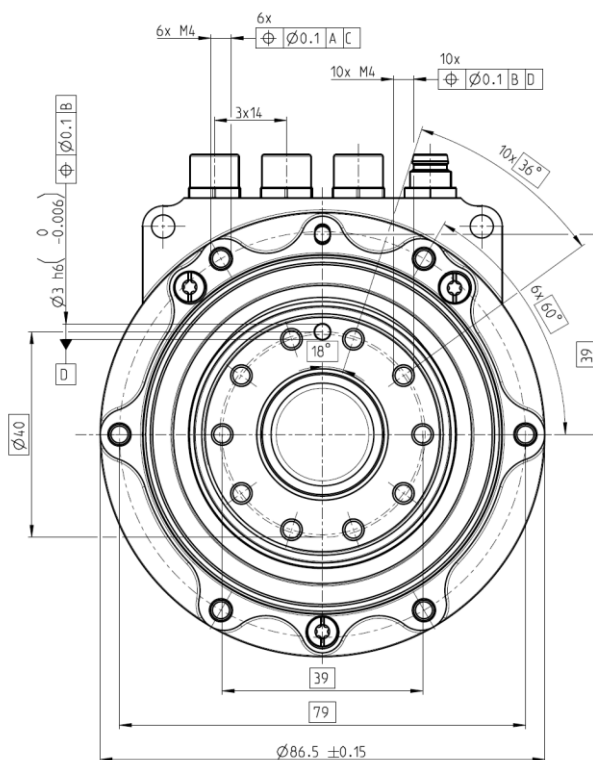
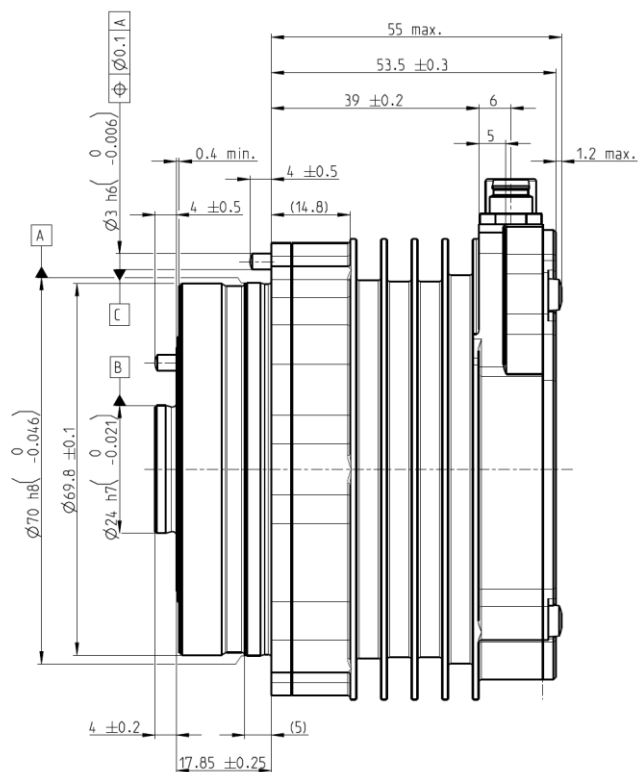
## MECHANICAL CHARACTERISTICS

Axial length, overall	ca. 73 mm
Diameter, excluding connectors	86.5 mm
Mass	1.05 kg
Max. joint axial, radial and bending loads, dynamic Note 1: The system provides an integrated cross-roller bearing. Note 2: Higher loads are possible, but might reduce structural lifetime (high-cycle fatigue). Details are available upon request.	900 N 90 Nm

## ELECTRICAL INTERFACES



Connectors: 4x M8	1x Power supply, 2x <i>EtherCAT</i> (allows daisy-chaining of several systems), 1x fan power and control
<i>EtherCAT</i>	Full Duplex, 100 Mbit/s
Grounding concept	All housing parts connected to DC link GND. <i>EtherCAT</i> shield connected to housing/GND.
Fan power and control	Power: 12 V, max. 700 mA. Control: PWM (Open Drain, 25 kHz). Tacho input: Pull-up, 10 kΩ.



## MECHANICAL DRAWINGS

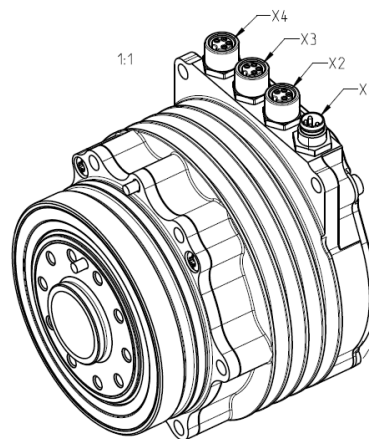


Please note: maxon can offer customized housing geometries, e.g., different thread sizes, hole patterns, attachment points, or heat sinking geometries. Please contact [robotics@maxongroup.com](mailto:robotics@maxongroup.com)

## ELECTRICAL PINOUTS

Steckerbelegung / PIN allocation		
Stecker/connector	PIN	Signal
<b>X1 Power</b> M8 male, 4poles, A-coded 	1	VBUS
	2	VBUS
	3	GND
	4	GND
<b>X2 EtherCAT In</b> M8 female, 4poles, A-coded 	1	TX+
	2	RX+
	3	RX-
	4	TX-

Steckerbelegung / PIN allocation		
Stecker/connector	PIN	Signal
<b>X3 EtherCAT Out</b> M8 female, 4poles, A-coded 	1	TX+
	2	RX+
	3	RX-
	4	TX-
<b>X4 Fan</b> M8 female, 4poles, A-coded 	1	Vcc 12V
	2	GND
	3	PWM-Fan
	4	Tacho-Fan



Please note:

- 1) Due to technical limitations and design decisions, the mounting orientation (rotation) of the 4x connectors X1-X4 is arbitrary and cannot be changed (rotated). This means that the keys of these connectors can point in any direction.
- 2) maxon can offer customized connectors or cabling solutions. Please contact [robotics@maxongroup.com](mailto:robotics@maxongroup.com)