

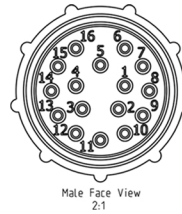
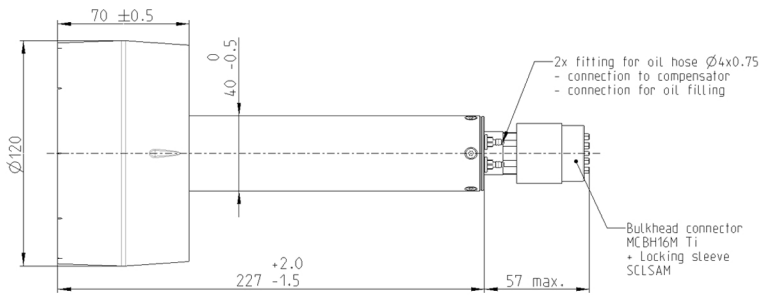


maxon thruster 40

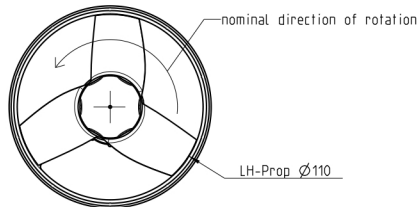
Specification: 522619
aquaticsolutions.maxongroup.com

Contact us: aquaticsolutions@maxonmotor.com

maxon thruster 40 350 Watt



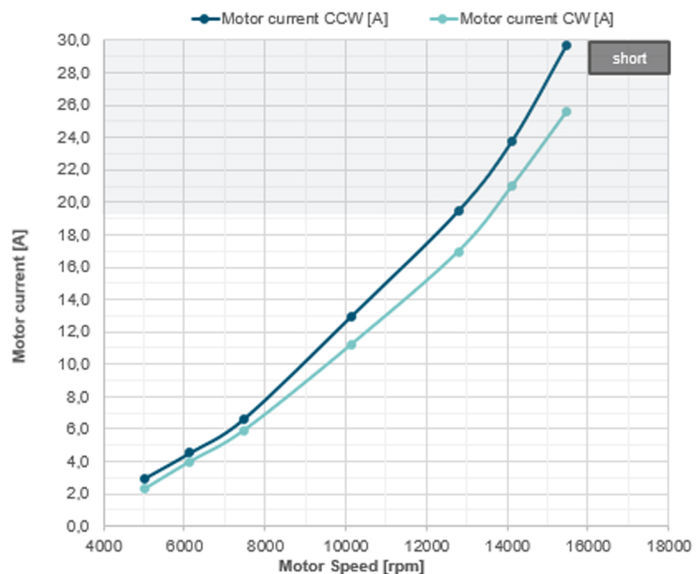
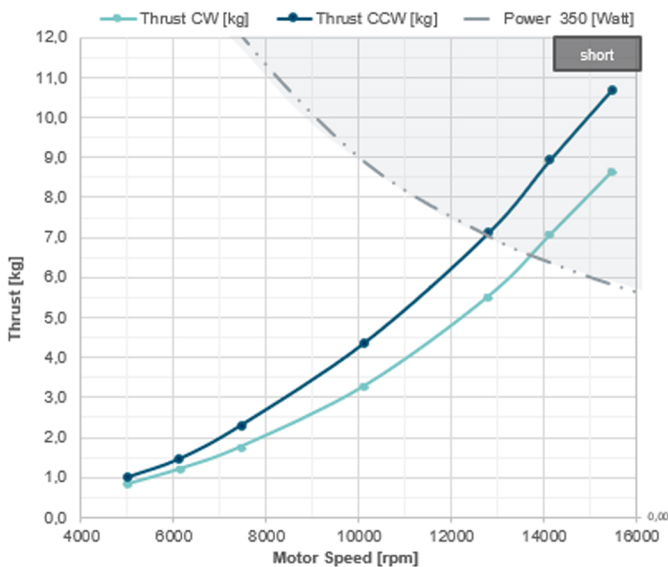
Connections	
Winding 1	6,10,14
Winding 2	7,11,15
Winding 3	8,12,16
Hall 1	5
Hall 2	9
Hall 3	13
GND	1
V Hall 3... 24 VDC	4
Temperature Sensor PT100	2
Temperature Sensor PT100	3



	Article number	
	Single	with MC70
Left hand propeller direction MT40 LH	522619	605792
Right hand propeller direction MT40 RH	619623	619653

Thruster specification		
1 Weight in air	gr	960
2 Weight in water (salt water)	gr	540
3 Prop diameter	mm	110
4 Number of blades	pcs	3
5 Depth rating	m	6.000
7 Pressure compensation (over pressure)	bar	0.1-0.7
8 Max. forward bollard thrust	kg	10.7
9 Continuous forward bollard thrust	kg	7
10 Max. reverse bollard thrust	kg	8.6
11 Continuous reverse bollard thrust	kg	6.3
12 Max. efficiency	%	80
13 Connector (basic version)		MCBH16 Male ti
14 Nominal Voltage	V	48
15 Max. current @ 48 V	A	29
16 No load current @ 5000 rpm motor	A	1.8
17 Max. stall current @ 48 V	A	470
18 Continuous current	A	20
19 Max. motor temperature	$^{\circ}\text{C}$	110
20 Continuous motor temperature	$^{\circ}\text{C}$	70

Bollard thrust Motor Current



CCW = Counterclockwise (forward)
CW = Clockwise (reverse)