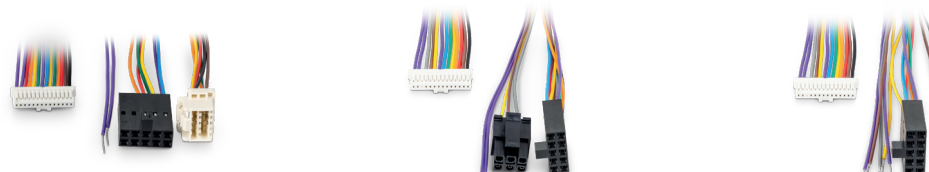


Adapter Cable TSX

For TSX RIO Versions with axial connector to EPOS4	For TSX MAG Versions with axial connector to EPOS4	For TSX MAG Versions with axial connector to ESCON
---	---	---

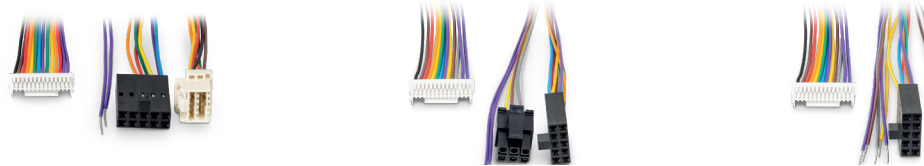


1st End (Encoder Side)	Manufacturer			Molex	
	Manufacturer Part-No.			5013301400	
Signal Assignment	Pin 1	NTC-, violet		NTC-, violet	
	Pin 2	NTC+, violet		NTC+, violet	
	Pin 3	DATA/, red		-	
	Pin 4	DATA, orange		H3, grey	
	Pin 5	CLK/, yellow		H2, brown	
	Pin 6	CLK, green		H1, yellow	
	Pin 7	I, violet		I, violet [a]	
	Pin 8	I/, blue		I/, blue [a]	
	Pin 9	B, green		B, green	
	Pin 10	B/, yellow		B/, yellow	
	Pin 11	A, orange		A, orange	
	Pin 12	A/, red		A/, red	
	Pin 13	GND, brown		GND, brown	
	Pin 14	V _{cc} , black		V _{cc} , black	
2nd End (Controller Side)	Manufacturer	Molex	Molex	Molex	
	Manufacturer Part-No.	22-55-2102	22-55-2102	22-55-2102	
	Signal Assignment	Pin 1	N.C.	N.C.	N.C.
		Pin 2	N.C.	V _{cc} , black	V _{cc} , black
		Pin 3	N.C.	GND, brown	GND, brown
		Pin 4	N.C.	N.C.	N.C.
		Pin 5	A/, red	A/, red	A/, red
		Pin 6	A, orange	A, orange	A, orange
		Pin 7	B/, yellow	B/, yellow	B/, yellow
		Pin 8	B, green	B, green	B, green
		Pin 9	I/, blue	I/, blue [a]	I/, blue [a]
		Pin 10	I, violet	I, violet [a]	I, violet [a]
	Signal Assignment	Manufacturer	Molex	Molex	-
		Manufacturer Part-No.	503149-1000	43025-0600	-
Pin 1		N.C.	H1, yellow	-	
Pin 2		N.C.	H2, brown	-	
Pin 3		N.C.	H3, grey	-	
Pin 4		N.C.	N.C.	-	
Pin 5		CLK, green	N.C.	-	
Pin 6		CLK/, yellow	N.C.	-	
Pin 7		DATA, orange	-	-	
Pin 8		DATA/, red	-	-	
Pin 9	GND, brown	-	-		
Pin 10	V _{cc} , black	-	-		
Wires without Connector			NTC+, violet / NTC-, violet	NTC+, violet / NTC-, violet / V _{cc} , black / GND, brown H1, yellow / H2, brown / H3, grey	
Wires			Stranded wire, UL1213, PTFE, 28 AWG, various colors		
maxon Part.-No.		L = 300 mm 708582	L = 300 mm 708583	L = 300 mm 708584	

[a] The index channel is not supported by all TSX Encoder versions.

Adapter Cable TSX

For TSX RIO Versions with radial connector to EPOS4	For TSX MAG Versions with radial connector to EPOS4	For TSX MAG Versions with radial connector to ESCON
--	--	--



1st End (Encoder Side)	Manufacturer			JST	
	Manufacturer Part-No.			NSHR-14V-S	
Signal Assignment	Pin 1	V _{cc} , black		V _{cc} , black	
	Pin 2	GND, brown		GND, brown	
	Pin 3	A/, red		A/, red	
	Pin 4	A, orange		A, orange	
	Pin 5	B/, yellow		B/, yellow	
	Pin 6	B, green		B, green	
	Pin 7	I/, blue		I/, blue [a]	
	Pin 8	I, violet		I, violet [a]	
	Pin 9	CLK, green		H1, yellow	
	Pin 10	CLK/, yellow		H2, brown	
	Pin 11	DATA, orange		H3, grey	
	Pin 12	DATA/, red		-	
	Pin 13	NTC+, violet		NTC+, violet	
	Pin 14	NTC-, violet		NTC-, violet	
2nd End (Controller Side)	Manufacturer	Molex	Molex	Molex	
	Manufacturer Part-No.	22-55-2102	22-55-2102	22-55-2102	
	Signal Assignment	Pin 1	N.C.	N.C.	N.C.
		Pin 2	N.C.	V _{cc} , black	V _{cc} , black
		Pin 3	N.C.	GND, brown	GND, brown
		Pin 4	N.C.	N.C.	N.C.
		Pin 5	A/, red	A/, red	A/, red
		Pin 6	A, orange	A, orange	A, orange
		Pin 7	B/, yellow	B/, yellow	B/, yellow
		Pin 8	B, green	B, green	B, green
		Pin 9	I/, blue	I/, blue [a]	I/, blue [a]
		Pin 10	I, violet	I, violet [a]	I, violet [a]
	Signal Assignment	Manufacturer	Molex	Molex	-
		Manufacturer Part-No.	503149-1000	43025-0600	-
Pin 1		N.C.	H1, yellow	-	
Pin 2		N.C.	H2, brown	-	
Pin 3		N.C.	H3, grey	-	
Pin 4		N.C.	N.C.	-	
Pin 5		CLK, green	N.C.	-	
Pin 6		CLK/, yellow	N.C.	-	
Pin 7		DATA, orange	-	-	
Pin 8		DATA/, red	-	-	
Pin 9	GND, brown	-	-		
Pin 10	V _{cc} , black	-	-		
Wires without Connector			NTC+, violet / NTC-, violet	NTC+, violet / NTC-, violet / V _{cc} , black / GND, brown H1, yellow / H2, brown / H3, grey	
Wires			Stranded wire, UL1213, PTFE, 28 AWG, various colors		
maxon Part.-No.		L = 300 mm 708585	L = 300 mm 708586	L = 300 mm 708587	

[a] The index channel is not supported by all TSX Encoder versions.